



# Co-Management Relationships With HOPDs

*Presented by:*

**Scott Safriet**, HealthCare Appraisers, Inc.

561.330.3488

[ssafriet@hcfmv.com](mailto:ssafriet@hcfmv.com)

**Krist Werling**, McGuireWoods LLP

312.750.8695

[kwerling@mcguirewoods.com](mailto:kwerling@mcguirewoods.com)

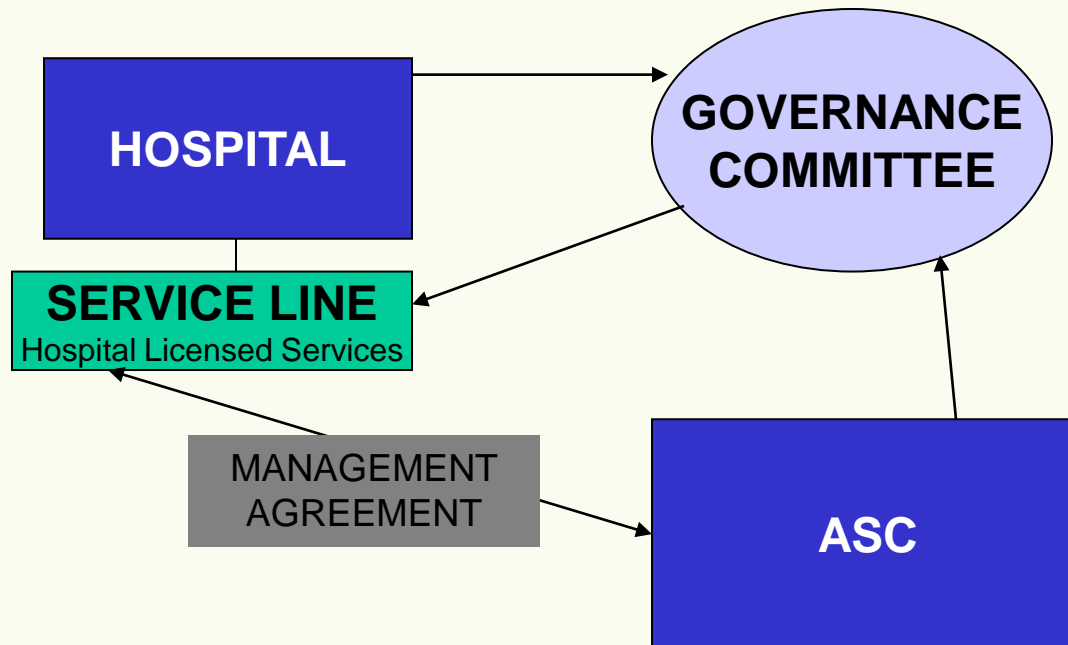
## Overview of Presentation

- Overview of Co-Management Arrangement Structures that Involve ASCs and HOPD's
- Discussion of Key Legal Issues
- Fair Market Value (“FMV”) Considerations and Structural Guidance

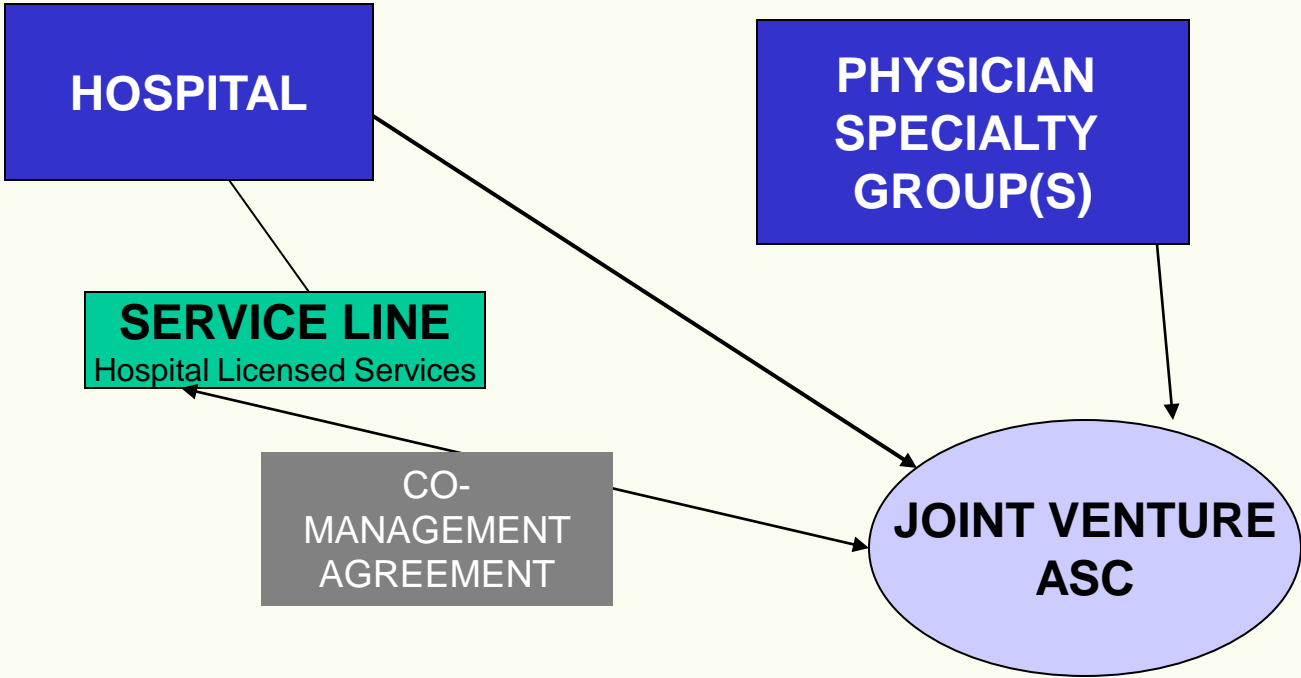
## Service Line Co-Management Relationships

- Purpose: Recognize and appropriately reward participants for developing, managing and improving the quality and efficiency of a particular hospital service line.
- Scope: May cover inpatient, outpatient, ancillary and/or multi-site services. With ASCs, arrangements may commonly cover exclusively outpatient surgical departments or both inpatient and outpatient surgical departments.
- Participants: May include one or more physicians, medical groups or faculty practice plans, or a joint-venture entity owned in part or entirely by participating physicians or medical groups. May also be directly with an ASC.

# Direct Contract Model With ASC



# Joint Venture Model



# Service Line Co-Management Arrangements

- Typically two levels of payment under the Co-Management Arrangement:
  - **Base Fee** – A fixed annual base fee that is consistent with the FMV of the time and efforts of the participating physicians
    - Includes compensation for service line development, management and oversight
  - **Bonus Fee** – A series of pre-determined payments that are contingent on the achievement of specified, mutually agreed upon targets
    - Targets must be objectively measurable and based on program development, quality improvement and efficiency

# Service Line Co-Management Arrangements

- Examples of Co-Management Services
  - Clinical improvements
  - Work flow process improvement
  - Physician and patient scheduling
  - Nurse and non-physician clinician oversight
  - Patient case management activities
  - Credentialing activities
  - Materials management
  - Medical staff committee service and leadership

## Key Legal Issues

- Anti-Kickback Statute and Anti-Kickback Statute Safe Harbors
- Civil Monetary Penalty Statute
- Stark Act
- False Claims Act
- 501(c)(3) Tax Exempt Issues
- Provider-based Status Rules

## Anti-Kickback Statute

- Prohibits the knowing and willful offer, solicitation, payment or receipt of anything of value that is intended to induce the referral of an individual for which a service may be made by Medicare and Medicaid or certain other federal and state healthcare programs or to induce the ordering, purchasing, leasing or arranging for, or recommending the purchase, lease or order of, any service or item for which payment may be made by such federal healthcare programs
- “One purpose” test
- Management fees paid to co-management group could be interpreted as remuneration intended to induce referrals to hospital
- *See 42 U.S.C. 1320a7-b(b)*

# Anti-Kickback Statute Safe Harbors

- Safe Harbors - If the requirements of a Safe Harbor are met, individuals and entities are insulated from prosecution under the Anti-Kickback Statute for conduct which would otherwise violate the Anti-Kickback Statute.
  - Personal Services Safe Harbor
  - Management Contracts Safe Harbor
- Key Issue – Compensation paid to physician groups for management or personal services must be FMV
- Co-Management contract will not meet Personal Services and Management Contracts Safe Harbor if “aggregate compensation” is not set in advance.
  - Maximum and minimum compensation may be set in advance, but aggregate compensation may not be.
  - OIG’s position is that percentage compensation is not “set in advance.”

## Civil Monetary Penalties Statute

- Prohibits a hospital from knowingly making a payment, directly or indirectly, to a physician as an inducement to reduce or limit services to a Medicare or Medicaid beneficiary
  - Penalties of up to \$2,000 for each such individual with respect to whom the payment is made
  - Potential for exclusion from Federal and State Healthcare programs
- Co-Management Agreement and structure that incentivizes behavior to reduce costs could run afoul of the CMP

# Physician Self-Referral Statute (“Stark Act”)

- Prohibits a physician from making referrals for “designated health services” (“DHS”) payable by Medicare to an entity with which he or she (or an immediate family member) has a financial relationship, unless an exception applies
- Financial relationship is prohibited between a physician and a hospital to which the physician refers patients unless an exception applies
- *See 42 U.S.C. 1395nn*
- Several exceptions can apply but compensation must be FMV and set in advance
- In 2009, CMS prepared a new exception that would apply to these arrangements but exception was not finalized

## False Claims Act

- Liability under the False Claims Act occurs when a person or entity presents a false claim or uses false information to support a claim
- Violations are punished by penalties of not less than \$5,500 and not more than \$11,000 per claim, plus treble damages for the amount of damages the Government sustains.
- FCA actions can be based on Anti-Kickback Statute and/or Stark Law violation.
- If a claim that a hospital submits to Medicare was improperly induced or violated the Stark Act, then it may also be a false claim.
- Whistleblower (qui tam) suits are allowed.

## Tax Exemption Rules

- Assets of a 501(c)(3) tax exempt entity cannot be used for private inurement, private benefit or excess benefits
- Reasonable compensation must be paid

## Typical Features of a Co-Management Arrangement

- As indicated earlier in our presentation, compensation for the manager’s services is typically comprised of a *base fee* and an *incentive fee*.
  - However, for smaller services lines or in unique instances (*e.g.*, sleep lab), there may only be a base fee.
- The co-management arrangement may or may not involve the creation of a new entity, which may or may not be owned in part by the hospital.
  - Thus, the “manager” may consist of physicians only, or physicians and hospital management collectively.
- The co-management agreement will replace any existing medical director agreements, *except* for certain agreements that are purposefully kept in place in coordination with the co-management arrangement. However, the medical directors will be paid from the *base fee* management fee.

## Typical Features of a Co-Management Arrangement

- The agreement stipulates a listing of core management/administrative services to be provided by the manager (for which the base fee is paid).
- The agreement includes pre-identified incentive metrics coupled with calculations/weightings to allow computation of an incentive payment (which can be partially or fully earned).
- Compensation is directed towards accomplishments rather than hourly-based services.

## Valuation Process – Riskiness of Co-Management Arrangements

- Among the spectrum of healthcare compensation arrangements, co-management arrangements have a relatively “high” degree of regulatory risk if FMV cannot be demonstrated.
  - By design, these agreements exist between hospitals and physicians who refer patients to the hospital.
  - Available valuation methodologies are limited and less objective as compared to other compensation arrangements.
  - Physicians are not being compensated under the traditional “hours worked and logged” approach.
  - The “effective” hourly rate paid to physicians may be higher than rates which would be considered FMV for hourly-based arrangements (since a significant component of compensation is at risk).

# Valuation Process – Approaches to Value

- Available valuation approaches include:
  - Cost Approach
  - Market Approach
  - Income Approach
- In considering these valuation approaches, an income approach can likely be eliminated since the possible or expected benefits of the co-management agreement *may not* translate directly into measurable income.

## The Cost Approach

- As one approach to value, the Cost Approach can be used to estimate the “replacement” or “replication” cost of the services to be provided by the manager.
- An estimate of the number of medical director hours required to manage the service line multiplied by an FMV hourly rate yields one indication of value.
  - However, the exact number of required work hours cannot reasonably be determined in advance.
  - Further, a key ideal of most co-management arrangements is to reward *results* rather than time-based efforts.

## The Market Approach

- A Market Approach recognizes that each co-management arrangement is unique and considers specific market and operational factors related to the subject arrangement.
  - The specific services of the co-management agreement can be itemized.
  - On an item-by-item basis, the relative worth of each task/objective can be “scored” relative to other comparable arrangements.
  - An indication of value of the management services can then be established by comparing the “scoring” of the subject agreement to other service arrangements in the marketplace.

## Valuation Synthesis

- The Cost and Market valuation methodologies must be reconciled to arrive at a final conclusion of value.
- While it may be appropriate to give equal weighting to the two approaches, the valuator may conclude that one method should be weighted more heavily than the other.
- Once the FMV of the *total management fee* is established, an assessment must be made regarding the split between the *base fee* and *incentive fee* components.
- The FMV of the base fee must encompass payment of any medical director fees or administrative services related to managing the service line.

## What Drives Value?

- As a percentage of the service line net revenues, the *total fee* payable under a co-management arrangement typically ranges from 2% to 6% (on a calculated basis).
- The fee is fixed as a flat dollar amount, including both base and incentive components, for a period of at least one year.
  - Commonly, the base fee equals 50-70% of the total fee.
- The extent and nature of the services drive their value. Thus, the valuation assessment is the same whether the manager consists of only physicians or physicians and hospital management.
- Determinants of value include:
  - What is the scope of the hospital service line being managed?
  - How complex is the service line? (*e.g.*, a cardiovascular service line is relatively more complex than an endoscopy service line)
  - How extensive are the duties being provided under the co-management arrangement?

## What Drives Value?

- Size adjustments based on service line revenue:
  - Large programs may be subject to an “economies of scale” discount.
  - Small programs may be subject to a “minimum fee” premium.
- Consider the appropriateness of the selected incentive metrics:
  - Is the establishment of the incentive compensation reasonably objective?
  - Consider the split of base compensation and incentive compensation.
- Occasionally, certain other services (*e.g.*, call coverage) may be included among the co-management duties. (Some hospitals prefer to embed call coverage in the co-management fee to avoid a separate compensation arrangement with the physicians.)

## Possible Pitfalls of Co-Management Arrangements

- The service line/revenue stream to be managed must be defined objectively, and there should be no overlap between services lines which may be subject to co-management arrangements.
- A co-management arrangement typically contemplates that no third-party manager is also providing similar services on behalf of the hospital service line.
- Medical director agreements that relate to the service line should be appropriately accounted for.
- Active participation and significant time and effort are required by busy physicians.
  - Documentation requirements



# Questions?

**Scott Safriet**, HealthCare Appraisers, Inc.  
561.330.3488  
[ssafriet@hcfmv.com](mailto:ssafriet@hcfmv.com)

**Krist Werling**, McGuireWoods LLP  
312.750.8695  
[kwerling@mcguirewoods.com](mailto:kwerling@mcguirewoods.com)